

TOUCH SCREEN USER MANUAL

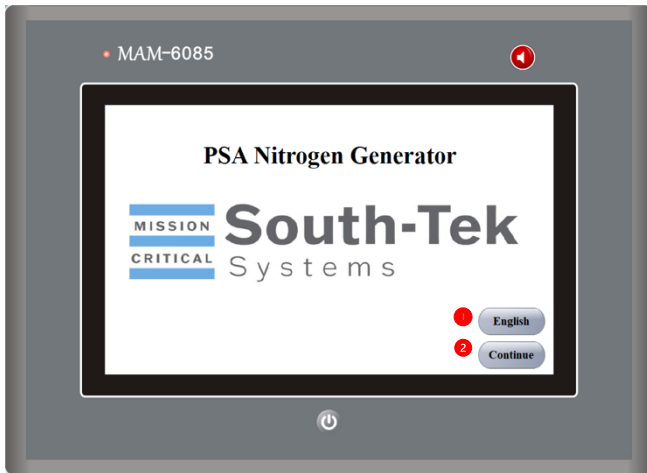


Figure 1 'Home Page'

Home Page

1. Click to change languages
2. Click to continue to the next page

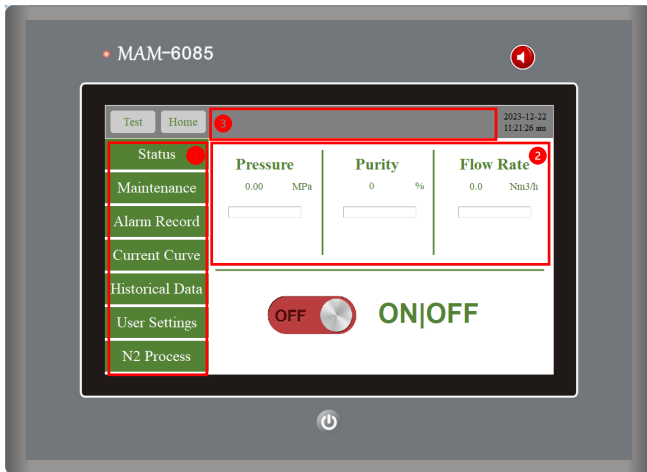


Figure 2 'Status Page'

Status Page

1. Function menu
2. Operating data section
Default: pressure, purity, flow rate
Optional: dew point, temp, cumulative flow rate
3. Alarm information section

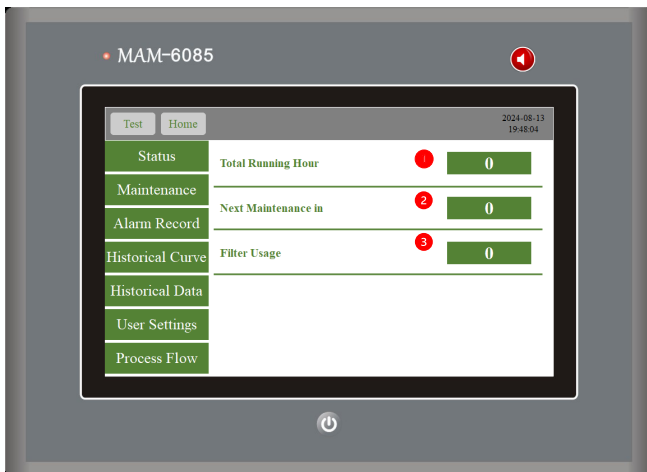


Figure 3 'Maintenance'

Maintenance

1. System total running hours
2. Time before next maintenance
3. Filter Usage
(Cleared after every maintenance)

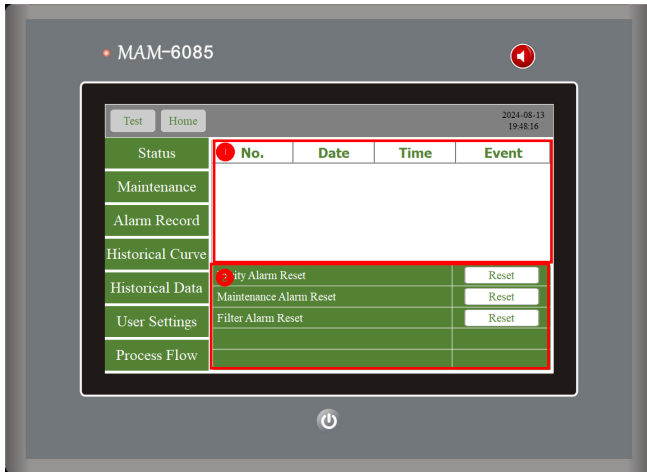


Figure 4 'Alarm Record'

Alarm Record

1. Alarm record section
2. Alarm reset section

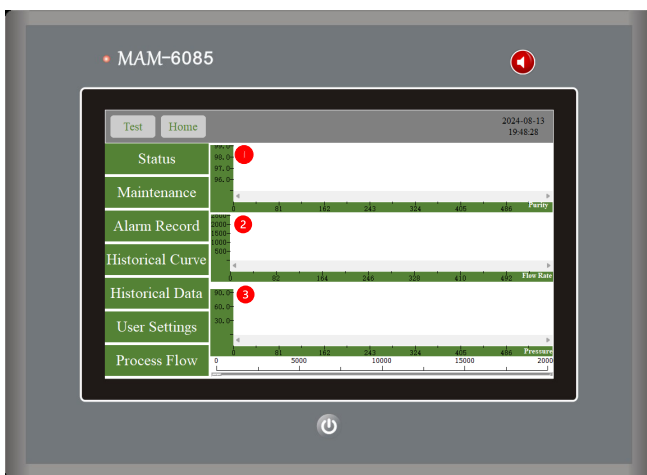


Figure 5 'Current Curve'

Current Curve

1. Current purity curve section
2. Current flow rate curve section
3. Current pressure curve section

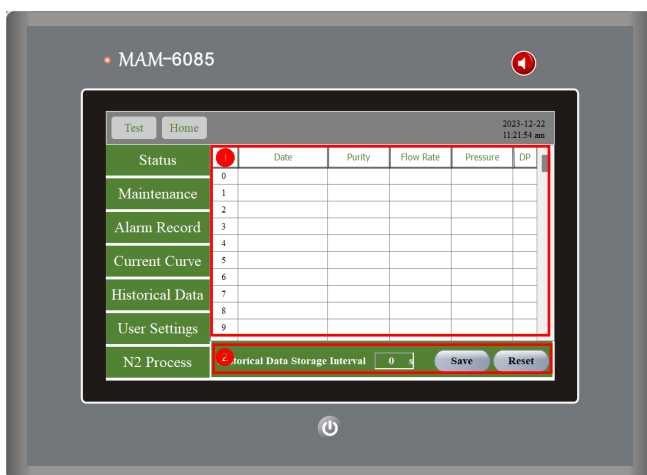


Figure 6 'Historical Data'

Historical Data

1. Historical data section
2. Historical data storage interval: User can set data storage interval based on their needs (30 sec, 1 min, 1 hour...)

User Settings

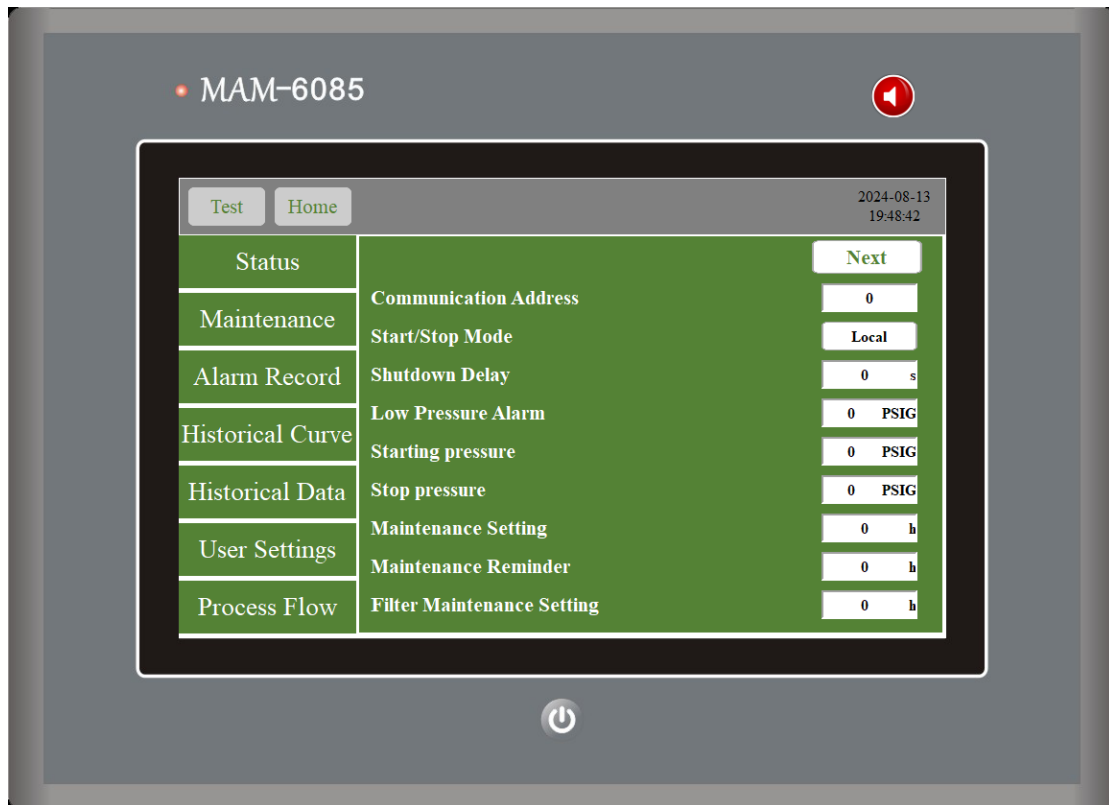


Figure 7 'User Settings 1'

Communication Address: For the control room to locate the system (value: 0~250)

Start/Stop Mode: Boot Mode can be selected from local and remote

Shutdown Protection Delay Time: After shutting down the system, it is necessary to set the shutdown delay to prevent the possibility of equipment damage due to switching the machine on and off multiple times in a short amount of period (air compressor and the air dryer under joint control also have the shutdown protection delay set)

Low Pressure Alarm Setting: When the inlet pressure is below the pressure requirement, low pressure alarm will go off.

System Starting Pressure Level Setting: User can set the system starting pressure value, when the pressure of the storage tank reaches the minimum set value, the device will automatically start up (Energy-saving mode, the time interval between starting and shutting the system shall not be less than 10 minutes; to switch off energy saving mode, please fill both values to zero)

System Shutting Pressure Level Setting: User can set the system shutting pressure value, when the pressure of the storage tank reaches the maximum set value, the device will automatically shut down (Energy-saving mode, the time interval between starting and shutting the system shall not be less than 10 minutes; to switch off energy saving mode, please fill both values to zero)

Maintenance Alarm Setting: User can set customized maintenance alarm time

Maintenance Reminder Setting: User can set customized maintenance reminder time

Filter Maintenance Setting: User can set customized filter maintenance time



Figure 8 'User Settings 2'

Purity Alarm Start Time Setting: If the purity level does not meet the requirement within the set time frame, system purity alarm will go off

Purity Alarm Shutdown Time Setting: If the purity issue does not get resolved within the set time frame, system will automatically shut down

Purity Alarm Setting: Users can set their desired purity alarm level

Purity Discharge Rate: To set the unqualified purity level, when the gas does not meet the required purity level, unqualified gases it will be automatically discharged.

Data Transmission Format: For the control room to obtain system transmission data (serial port one)

Data Transmission Baud Rate: For the control room to obtain system transmission data

Time Settings: Set based on customer's requirement

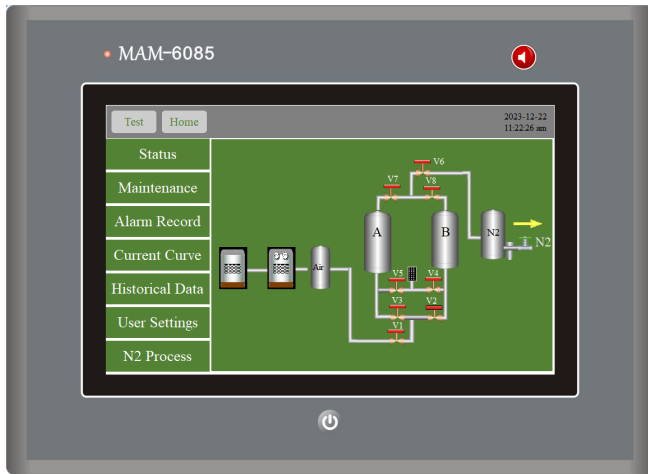


Figure 9 'N2 Process Flow'

N2 Process Flow

1. System current process flow

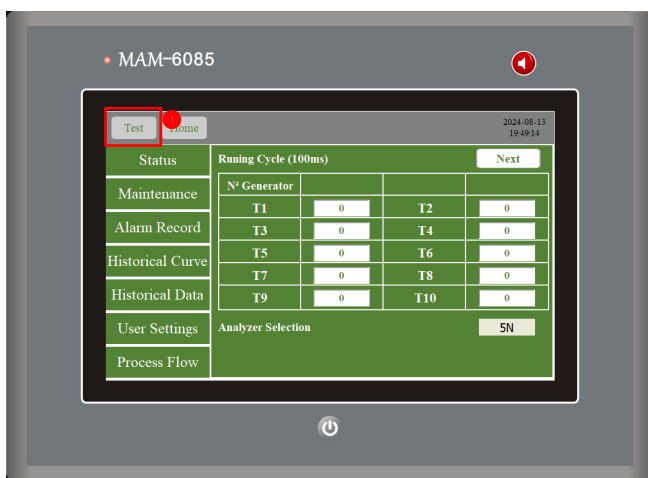


Figure 10 'Test Settings'

Test Settings

1. Time Table: The timetables of the nitrogen generator can be set, based on the requirement of our partners
2. Running Cycle Unit (100ms)

Note: Timetables shall not be modified without the consent of the manufacturer, otherwise the user will be responsible for the failure of the equipment

Analyzer Selection: Set based on the different types of analyzer



Figure 11 'Test Settings 2'

Purity Calibration: If the purity level displayed on the screen is different from the data on the purity analyzer, it can be corrected.

Purity Range Maximum Setting: The maximum value of the purity range needs to be set based on the different specifications of the analyzer

Purity Range Minimum Setting: The minimum value of the purity range needs to be set based on the different specifications of the analyzer

Pressure Calibration: If the pressure value displayed on the screen is different from the data on the pressure sensor, it can be corrected

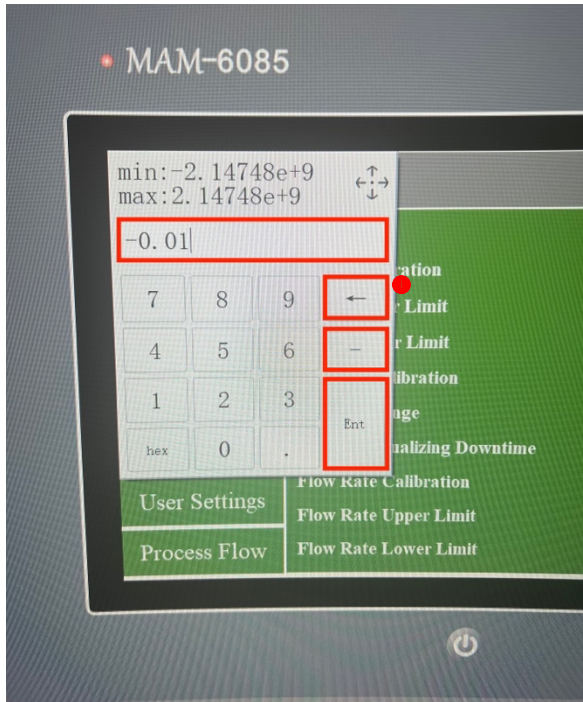
Pressure Range Maximum Setting: The maximum value of the pressure range needs to be set based on the different specifications of the pressure sensor

Pressure Equalizing Shutdown Time Setting: Set based on the sizes of adsorption towers

Flow Rate Calibration: If the flow rate value displayed on the screen is different from the data on the flow rate meter, it can be corrected

Flow Rate Range Maximum Setting: The maximum value of the flow rate range needs to be set based on the different specifications of the flow rate meter

Flow Rate Range Minimum Setting: The minimum value of the flow rate range needs to be set based on the different specifications of the flow rate meter



Calibration Instruction

Note: Please note that accurate data is subject to the digital transducers. When transmitting signals from the digital transducers to the PLC, signal transmission fluctuations may occur, which is when calibration is needed.

- Based on the digital transducers, if the PLC value is lower than the actual value, then put in the number of difference and hit enter.
- If the PLC value is greater than the actual value, then put in the minus sign before the number of difference and hit enter.
- 1. Backspace button.